



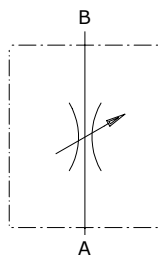
Type VSRB needle valves

- Bidirectional

Technical specifications and diagrams are measured with mineral oil of 46 cSt viscosity at 40°C (104°F) temperature.

	VSRB 14	VSRB 38	VSRB 12	VSRB 34	VSRB 100
Nominal flow from A to B	30 l/min (7.9 US gpm)	45 l/min (11.9 US gpm)	70 l/min (18.5 US gpm)	100 l/min (26.4 US gpm)	150 l/min (39.6 US gpm)
Max. pressure	350 bar (5100 psi)	350 bar (5100 psi)	350 bar (5100 psi)	300 bar (4350 psi)	250 bar (3600 psi)
Fluid	mineral based oil				
Viscosity	from 10 to 200 cSt				
Max. level of contamination	18/16/13 ISO4406				
Fluid temperature	with NBR seals: from -20°C (-4°F) to 80°C (176°F)				
Environmental temperature for working conditions	from -40°C (-40°F) to 100°C (212°F)				
Weight	<i>steel</i> 0.30 kg (0.66 lb)	0.48 kg (1.06 lb)	0.59 kg (1.3 lb)	1.34 kg (2.95 lb)	2.15 kg (4.74 lb)

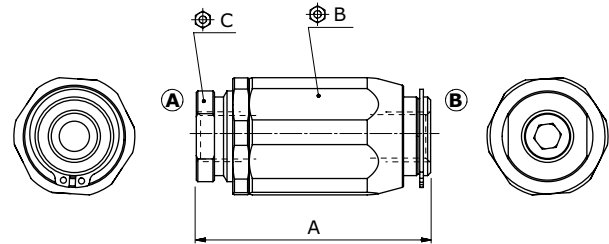
NOTE - For different conditions, please contact Walvoil Sales Dpt.



Dimensions

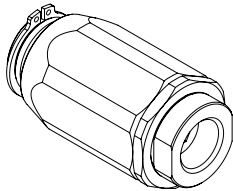
Dimensions are in mm-in

Valve type	All ports	A	⌀B	⌀c
VSRB 14	G 1/4	66-2.6	32	22
VSRB 38	G 3/8	77.5-3.05	38	26
VSRB 12	G 1/2	83-3.27	41	30
VSRB 34	G 3/4	104-4.09	55	38
VSRB 100	G 1"	118.5-4.66	65	46



Ordering codes and description composition

Port size
VSRB 14



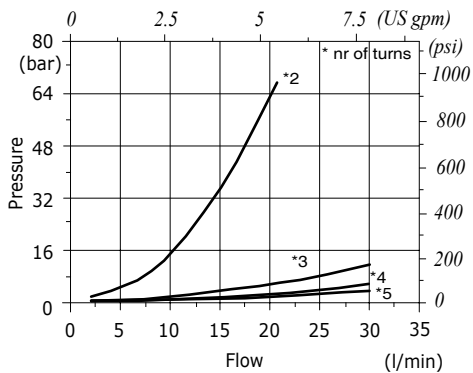
VSRB complete valves

TYPE	CODE	DESCRIPTION
VSRB 14	1603210100	Steel body, G1/4 ports
VSRB 38	1603220100	Steel body, G3/8 ports
VSRB 12	1603230100	Steel body, G1/2 ports
VSRB 34	1603240100	Steel body, G3/4 ports
VSRB 100	1603250100	Steel body, G1 ports

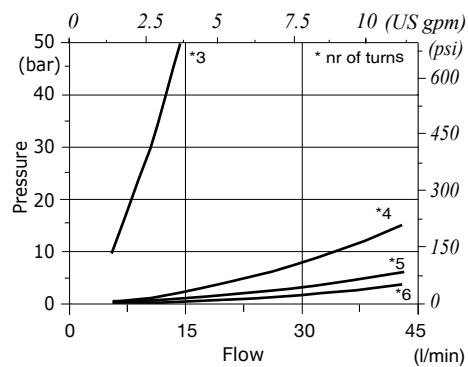
For different configurations or SAE thread please contact our Sales Dpt.

Rating diagram

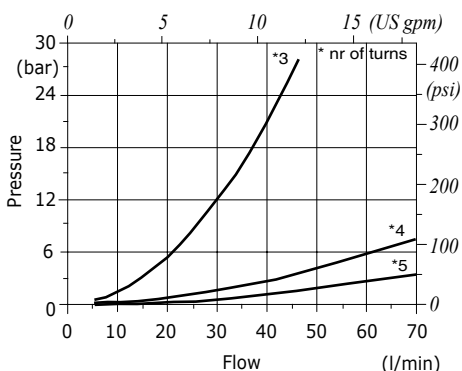
VSRB 14 pressure drop vs. flow



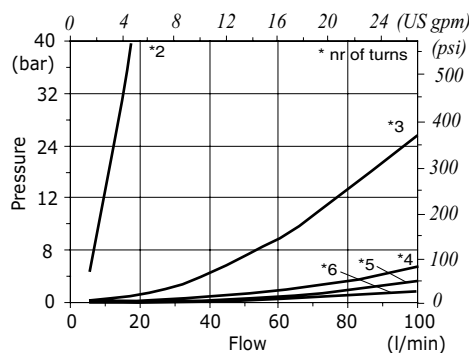
VSRB 38 pressure drop vs. flow



VSRB 12 pressure drop vs. flow



VSRB 34 pressure drop vs. flow



VSRB 100 pressure drop vs. flow

